



Jacksonville

Range Complex

Environmental Impact Statement/Overseas Environmental Impact Statement (EIS/OEIS)

Geography of the Jacksonville Range Complex Study Area

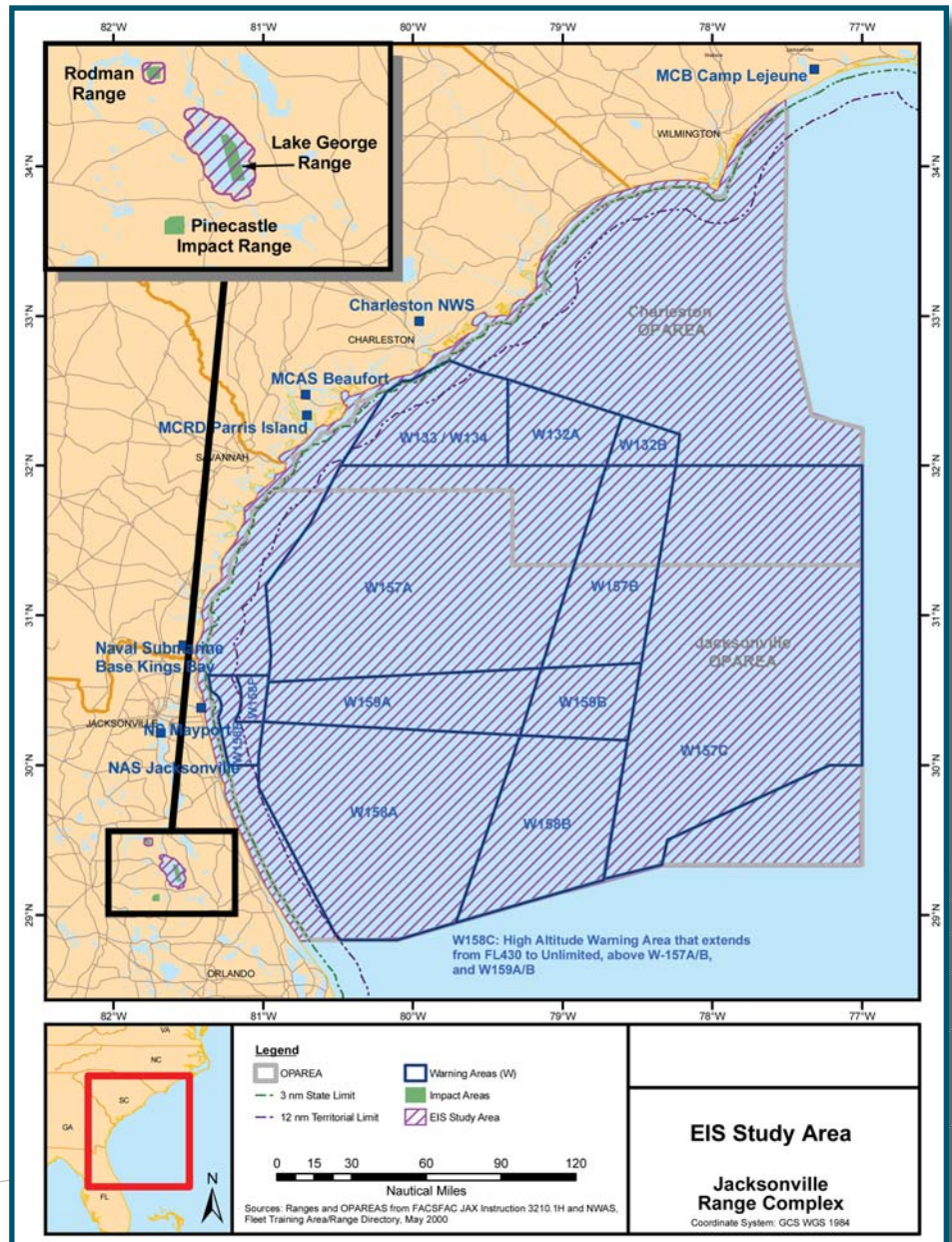
THE JACKSONVILLE RANGE COMPLEX STUDY AREA

The geographic scope of this EIS/OEIS is referred to as the Jacksonville Range Complex Study Area (See Figure). The Study Area includes the area from the mean high tide line east (seaward) to the 3-nautical-mile (nm) boundary of the states of North Carolina (southern portion), South Carolina, Georgia, and Florida (northern portion). This 3-nm state boundary also serves as the western boundary of the Jacksonville and Charleston OPAREAs, which are the main part of the Study Area. The Jacksonville Study Area also includes two land ranges located south of Jacksonville, FL (Rodman Range and the Lake George Range).

The chief area analyzed in the Study Area is referred to as the Jacksonville Range Complex, including its defined airspace, seaspace, and undersea space. This area includes a large expanse of the Atlantic Ocean offshore from North Carolina, South Carolina, Georgia, and Florida eastward to 77° west longitude.

The Jacksonville Range Complex represents an essential three-dimensional space that provides a realistic and safe training area for Navy personnel. For nearly 65 years, the area has supported Navy training activities, and is now host to a wide range of training every year to ensure our military members are ready for combat.

The Jacksonville Range Complex is the principal training area for air, surface, and submarine units located in Charleston, SC; Kings Bay, GA; and Jacksonville, FL. In addition to serving as the site for essential Navy training, the Jacksonville Range Complex is host to activities for research, development, testing, and evaluation of emerging maritime and combat technologies.



Jacksonville Range Complex EIS/OEIS Study Area Boundaries



WHAT IS A RANGE COMPLEX?

Ranges and operational areas (OPAREAs) are locations where Navy personnel train to accomplish their mission of national defense. The Navy has geographically grouped its ranges and OPAREAs to form range complexes, which are organized and managed to optimize training opportunities in a safe and controlled environment. The ranges and facilities of the Jacksonville Range Complex are unique and provide training opportunities essential for the safety and readiness of military personnel and the success of the military mission. The protection of natural and cultural resources is also an integral component of this training. Navy training activities incorporate protective measures as standard operating procedures to promote environmental conservation.

JACKSONVILLE RANGE COMPLEX

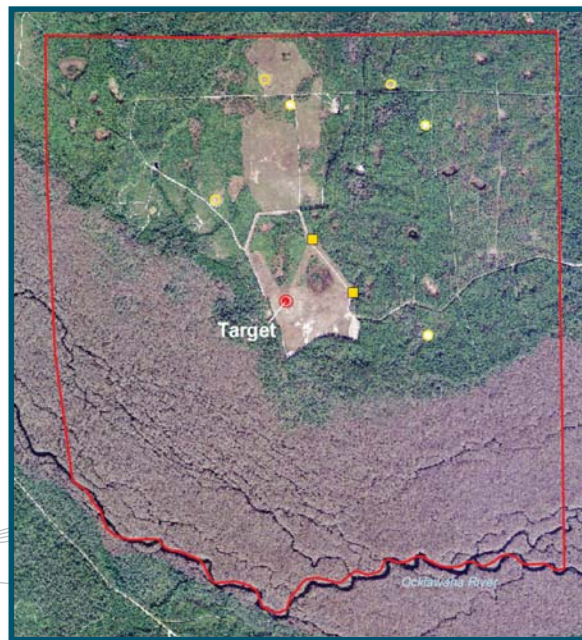
The Jacksonville Range Complex is a three-dimensional training area that includes sea space, land ranges and Special Use Airspace (SUA). The Range Complex also includes facilities and instrumentation areas that support the training conducted there.

Sea Space. Often referred to as an OPAREA, sea space includes areas used on or below the water's surface. In the Jacksonville Range Complex there are two OPAREAs: Jacksonville and Charleston.

Land Ranges. Land ranges include one or more targets used for a variety of training exercises, such as strike warfare or marksmanship. This EIS /OEIS evaluates activities at two land ranges (Rodman Range and Lake George Range). The nearby Pinycastle Impact Range is not included in the EIS/OEIS Study Area because an environmental impact statement was recently completed for the land range and it is currently being updated (Department of the Navy, 2003).

Special Use Airspace (SUA). Special use airspace is airspace designated by the Federal Aviation Administration (FAA) for the confinement of certain activities, such as military flight operations. The FAA also may impose limitations on aircraft operations that are not part of the designated activities.

Supporting Infrastructure. The land, sea and airspace training areas are supported by training facilities and instrumentation facilities.



Rodman Range



Public involvement is a fundamental part of the Jacksonville Range Complex EIS/OEIS development and the Navy wants and appreciates your comments. The Navy has established several venues and informational resource areas for the public to learn and provide input.

Comments on the Draft Jacksonville Range Complex EIS/OEIS will be accepted via mail, fax, or the project Web site. All comments should be submitted no later than August 11, 2008 for consideration in the Final Jacksonville Range Complex EIS/OEIS.

**THE NAVY
WANTS
YOUR
INPUT!**

For more information or to submit comments, please contact:
 Naval Facilities Engineering Command, Atlantic
 Attn: JAX EIS/OEIS PM – Code EV22CM
 6506 Hampton Boulevard
 Norfolk, VA 23508-1278
 Fax : 757-322-4894
 Web site: <http://www.JacksonvilleRangeComplexEIS.com>